



# wheezeo

WheezeRate Detector  
**Model WZO01**



**OWNER'S MANUAL**

**wheezo is not a diagnostic tool and is intended for use in a home setting**  
**Read instructions before use for wheezo WheezeRate Detector**

## TABLE OF CONTENTS

Introduction	1
Intended use	1
General information	1
Important safety instructions	2
What's in the box	3
Parts and displays	3
Smart device compatibility	3
Wheeze rate principle	4
Limitations of use and contraindications	4
Warnings	4
Setting up wheezo for the first time	5
Access to Bluetooth	6
Bluetooth proximity	6
Operating environment	6
Taking a wheeze rate	7
Operating instructions	8
Data syncing	14
Led status indications	14
Account Security	14
Maintenance and cleaning	15
Recharging the battery	15
Troubleshooting	16
Technical specifications	17
Electromagnetic Immunity and Emissions Declaration	18
Explanation of safety signs & symbols on device & packaging	19
Warranty	20

## INTRODUCTION

Thank you for purchasing wheezo WheezeRate Detector by Respi. This manual provides important information to help you use wheezo properly. Before using this product, please read the Owner's Manual thoroughly.

wheezo records breathing sounds and detects and records wheeze. Easy to use, the wheezo ecosystem of breath sensor, app and cloud storage provides a service to record and review your wheeze rate results and history.

## INTENDED USE

wheezo is intended to detect and record abnormal breath sounds (continuous adventitious breath sounds/CABS) at the windpipe (trachea), reported as WheezeRate in adults and children (2 years and older).

A licensed health care professional's advice is required to understand the meaning and importance of the wheezo readings.

## GENERAL INFORMATION

wheezo works with iOS and select Android devices and connects via Bluetooth.

When taking a wheeze rate, the user holds the breath sensor to their trachea (windpipe) on the lower part of the neck.

The breath sensor acquires, filters and digitises the breath sounds and transfers the data via Bluetooth to the app where it is analysed for the presence of wheeze reported as wheeze rate. The app controls the recording process and provides feedback on the user's progress.

All recorded data is automatically uploaded to the user's account on the secure wheezo cloud server when an active internet connection is made.



## IMPORTANT SAFETY INSTRUCTIONS

---

**Once removed from its packaging, check that there is no visible damage on the wheezo breath sensor. In the case of damage, do not use it and return it to the seller.**

- Use only with iOS and select Android devices
- Use only an AC adaptor that complies with IEC 60950-1 or IEC 60601-1\* for charging
- The USB-C port on the bottom of the breath sensor is only for charging of the internal battery
- To prevent entanglement and strangulation, do not place the USB charging cable provided in reach of children
- Use only in environments specified in this Owner's Manual
- Do not expose to liquids
- Do not tamper with the blue sensor diaphragm
- Do not expose the device to extreme temperatures – very hot or very cold, high humidity, dust or direct sunlight. wheezo should be used in temperatures 0° – 40° C.
- Do not drop the device or treat it roughly in any way
- Never attempt to repair the device yourself. Opening of wheezo invalidates all guarantee claims
- Degraded sensors and microphones can affect performance
- The normal function of the product may be disturbed by strong Electro-Magnetic Interference. If so, simply reset the product to resume normal operation by following the instruction manual. In case the function cannot resume, please use the product in a different location
- The distance between the wheezo device and smartphone must not exceed 1.3 metres.
- In compliance with the European Directive on Waste Electrical and Electronic Equipment (WEEE) 2012/19/EU, do not dispose of this product as unsorted municipal waste. Follow local, state and national governing ordinances and recycling instructions reading disposal or recycling of the device

\*IEC 60950-1 is the reference standard for power supplies under Information Technology Equipment. IEC60601-1 is the international basic safety and essential performance standard for electrical medical equipment and medical electrical systems.



### WHAT'S IN THE BOX

wheezo Breath Sensor  
USB-A to USB-C charging cable  
Owner's manual

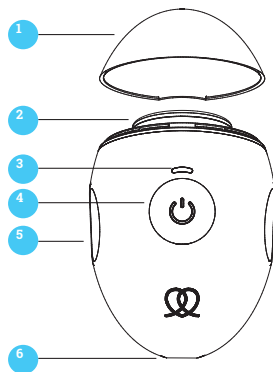


Figure 1.

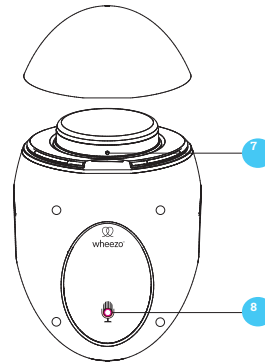


Figure 2.

1. Protective cap
2. Sensor diaphragm (applied part)
3. LED indicator
4. Finger grips

5. USB charging port
6. Power button
7. Air vent
8. Background microphone

### SMART DEVICE COMPATIBILITY

Owner supplied smart device  
Made for iPhone 6s and up running iOS 13 or later  
Select Android devices

### WHEEZE RATE PRINCIPLE

Wheezing is an abnormal breath sound which serves as physiological sign of airflow limitation in the lungs. Wheeze rate is the percentage of the recorded breath sounds occupied by wheeze.

### LIMITATIONS OF USE AND CONTRAINDICATIONS

wheezo is not intended for diagnostic use.

wheezo is intended to detect and record abnormal breath sounds (continuous adventitious breath sounds/CABS) at the windpipe (trachea), reported as WheezeRate in adults and children (2 years and older).

A licensed health care professional's advice is required to understand the meaning and importance of the wheezo readings.

### WARNINGS

- If the user is feeling breathless, or experiencing other symptoms, it is important to prioritise treatment over taking a wheeze rate. Do not delay treatment.
- Regardless of the wheeze rate, if the user has signs and symptoms such as chest tightness, shortness of breath, coughing or wheezing, they should always follow their healthcare professional's advice.
- Electromagnetic interference (EMI) can occur in the home health care environment as control over other equipment cannot be guaranteed. Interference from other equipment can be recognized by interruption during recording. If this occurs, one of the

following error messages will appear on the application screen:

- Something went wrong. (Error code: 266) - Try again
- Couldn't find my breath sensor. Make sure it is switched on and within range - Try again

There is no essential performance for the wheezo device for the purpose of wheeze recording. The basic safety of the device is not affected if the recording is interrupted. Continuous transmission of breath sounds and background sounds to the wheezo app over Bluetooth demonstrates the immunity to sources of electromagnetic interference. This has been demonstrated by complying with the standard IEC 60601-1-2.

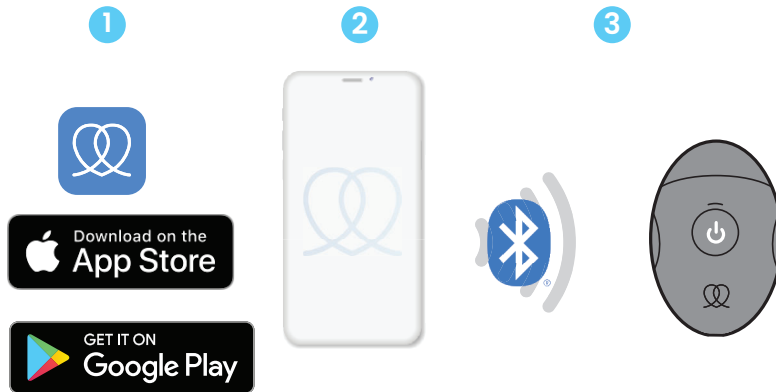
Moving away from the source of interference will usually allow the device to operate normally. Sources of interference may include communication equipment, wireless communication devices, household appliances, and industrial equipment. Examples are radio frequency identification systems (RFID), FM radio, television, cellular network of mobile phones, security systems, and microwave ovens.

- Portable RF communications equipment (including peripherals such as antenna cables and external antennas) should be used no closer than 30 cm (12 inches) to any part of Wheezo including cables specified by the manufacturer. Otherwise, degradation of the performance of this equipment could result.



### SETTING UP WHEEZO FOR THE FIRST TIME

1. wheezo breath sensor is powered by a built-in rechargeable battery. Before using for the first time, plug one end of the USB charging cable supplied into the end of the device and the other end into a compliant AC adaptor. Charge it for up to three hours before first use. A fully charged battery typically lasts up to 20 recordings.
2. While charging, the breath sensor's LED indicator will flash green. When it is fully charged, the LED will display solid green.
3. Download the wheezo app from AppStore or Google Play Store and launch it to connect the breath sensor to the app.
4. Enable Bluetooth on your mobile device. Allow the app to access and use Bluetooth and follow the instructions on the screen. Note: Android requires Location Services to be enabled for the initial Bluetooth pairing.
5. Remove wheezo breath sensor's protective cap and turn it on by holding the power button down until the LED indicator flashes blue, indicating it is ready to pair with your smart device.
6. When wheezo breath sensor and your smart device are paired, the LED indicator will display solid blue.
7. If you require assistance to set up your wheezo, please contact [support@wheezo.com](mailto:support@wheezo.com)



#### **ACCESS TO BLUETOOTH**

Enable Bluetooth on your smart device in order to pair with wheezo breath sensor. You can enable Bluetooth in your smart device settings. Check your smart device manual on how to do this.

#### **BLUETOOTH PROXIMITY**

Make sure that wheezo breath sensor is within Bluetooth proximity of your smart device. If your smart device is too far away from the breath sensor, the connection could be lost.

#### **OPERATING ENVIRONMENT**

wheezo has been designed for use in a quiet environment e.g. home, school or office. It is not designed to be used in direct air currents (e.g. wind), source of heat or cold, direct sun rays or other source of light or energy, dust, sand or any other chemical substances or performance will be affected.

### TAKING A WHEEZE RATE

1. wheezo needs to be used in a quiet place. No talking, TV or music and limit movement.
2. wheezo is designed to be applied to the trachea (windpipe). Using the finger grips on the sides as a guide, firmly hold the breath sensor's blue diaphragm to the side of your trachea on the lower part of the neck. Tap Start recording on the app and breathe normally.
3. Keep breathing normally until the app has completed the recording and analysis of your breath sounds. wheezo needs between 30 – 60 seconds to analyse your breath sounds for wheeze rate, depending on the background noise and the correct position of the sensor. If you have a blocked nose, it is recommended to open your mouth while recording.
4. Your wheeze rate will be displayed. Follow the instructions in the app to set up an account so you can store your history of recordings, wheeze rate results and other information securely on the cloud.
5. Turn the breath sensor off by holding the power button until the LED goes out. Note that it will automatically turn off after 2 minutes of remaining idle in order to save power.

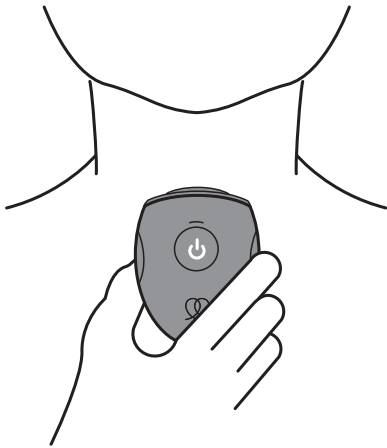


Figure 3.



Note: The breath sensor's blue diaphragm should be gently connected to the skin of the neck when taking a recording. No pressure or force on the trachea (windpipe) is required. Recordings should be taken whilst in a seated, upright position.

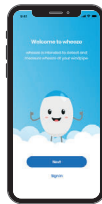
## OPERATING INSTRUCTIONS

1



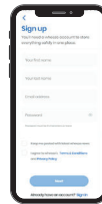
Launch the wheezo app on your smart device

2



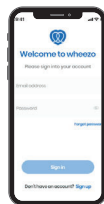
Select 'Next' to create a new account or 'Sign in' for existing users

3



Enter your details to create a new wheezo account

4



Or enter your existing wheezo account details to login

5



Enter your details to create your new wheezo profile (wheezo allows for more than one profile for family members)

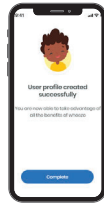
6



You can select an avatar as part of your profile

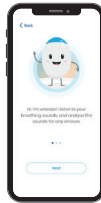
## OPERATING INSTRUCTIONS

7



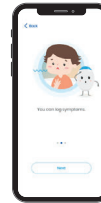
Your user profile is now successfully created

8



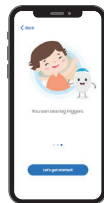
These next few steps provide an overview of what wheezo does. It records your breathing and analyses for wheeze

9



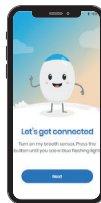
You can also log symptoms

10



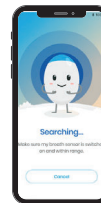
and even log triggers

11



Now it's time to connect your wheezo device to your smartphone. Ensure your smartphone Bluetooth is 'on'

12



Turn on your device and the blue flashing light indicates that it is searching for a connection.

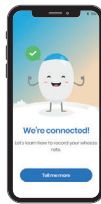
## OPERATING INSTRUCTIONS

13



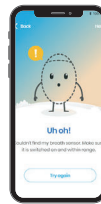
Select 'wheezo' from the Accessory List

14



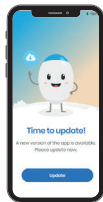
You have now paired your device to your phone. It's time to get started

15



An error message will appear if your phone cannot locate your wheezo device

16



Your app will notify you if you are required to update your app

17



Select 'Next' to read more on 'How to use wheezo'

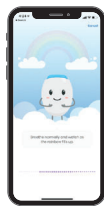
18



Place the blue sensor at your windpipe and select 'Start recording'

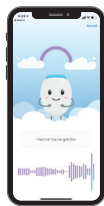
## OPERATING INSTRUCTIONS

19



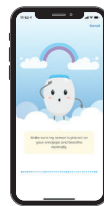
Follow the on screen instructions whilst recording your breathing

20



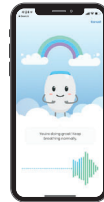
As you progress through the breath recording the rainbow will fill up

21



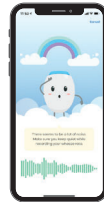
The app will notify you when the device isn't correctly positioned on your trachea (windpipe)

22



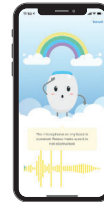
And will revert back to recording when the device is moved to the correct position

23



The app will also notify you if there is a lot of background noise

24



And if you are accidentally covering the microphone on the back of the device

## OPERATING INSTRUCTIONS

25



Continue to record your breathing until the rainbow is full

26



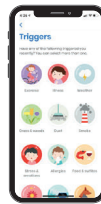
Your wheeze rate will be displayed on your screen. See page 4 for information on wheeze rate.

27



Tap to select other 'Symptoms'

28



The app will display possible triggers

29



Tap on all relevant triggers to securely store this information with your breath recording

30



Your recording is complete and stored securely in the cloud

## OPERATING INSTRUCTIONS

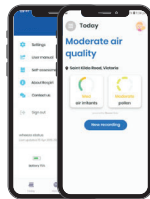
31




You can view the 'History' of your recordings by selecting 'History' in the menu options

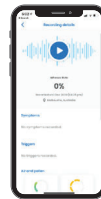
31.1

Android



To view the menu when using Android, select the  and the menu options will appear from the left

32



Selecting a recording from the history will provide access to listen back to the recording

33



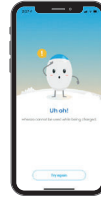
And will provide and access to the other recorded information such as triggers or local pollen levels at the time of recording

34



When opening the app following your initial set-up you will see the 'Today' home screen

35



Note: you cannot take a wheeze recording if the wheezo device is charging



### DATA SYNCING

wheezo is capable of operating offline. The app can store 20 of the most recent wheeze rate results locally on the smart device and they will be uploaded to the cloud when the app regains an active internet connection. When the app needs to save a new wheeze rate and has already stored 20 results. The app will notify the user when the app reaches the offline storage limit.

### LED STATUS INDICATIONS

Solid blue	wheezo breath sensor connected to smart device
Flashing blue	wheezo breath sensor searching for connection with smart device
Flashing blue & white	wheezo breath sensor searching for a smart device it has already been paired with
Solid yellow	An error has occurred
Flashing yellow	Low battery Background microphone obstructed
Solid green	Fully charged
Flashing green	Charging

### SECURITY

To ensure the highest level of security the user should choose a strong password which should not be shared with others. wheezo account passwords are required to meet the below minimum criteria:

- Minimum 8 characters in length
- 1 uppercase alphabetical character
- 1 lowercase alphabetical character
- 1 number
- 1 special character

Users must be sure that they are on the correct user profile and enable security updates on your mobile phone.



### MAINTENANCE & CLEANING

wheezo breath sensor does not require professional maintenance. If you have a problem you cannot resolve through reviewing this manual, email us at [support@wheezo.com](mailto:support@wheezo.com)

Handle the wheezo breath sensor carefully. Use the protective sensor cap and store it in clean and moisture free conditions. Before use, always check that the device is free from dust, contamination or any particles. To clean the device, use a damp cloth without any detergents.

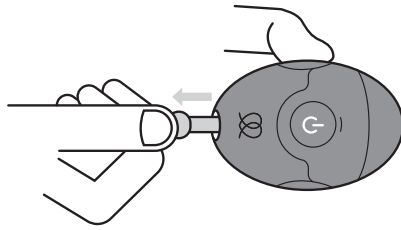


Figure 4.

### RECHARGING THE BATTERY

The built-in Lithium-Ion Polymer battery is a rechargeable battery. Pull out the charging port cover and insert the USB cable provided into the USB port on the bottom of the wheezo breath sensor. Recharging the battery requires up to 3 hours. Approximately 20 wheeze rates can be performed per charge. This device requires a compliant AC adaptor with minimum output of 0.5A\*.

Note: wheezo will not enter record mode during charging.

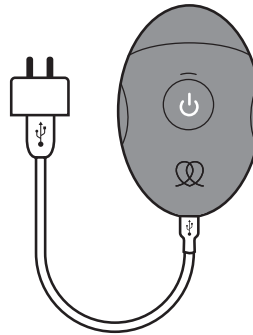


Figure 5.

\*IEC 60950-1 is the reference standard for power supplies under Information Technology Equipment. IEC60601-1 is the international basic safety and essential performance standard for electrical medical equipment and medical electrical systems.

## TROUBLESHOOTING

If you follow the recommended action but the problem persists, or there is unexpected operation or events, please email [support@wheezo.com](mailto:support@wheezo.com). Do not attempt to repair the wheezo breath sensor by yourself and never under any circumstances try to disassemble the breath sensor.

Problem	Possible cause(s)	Solution(s)
Low Battery	wheezo breath sensor battery is running low	Charge wheezo by connecting it to a USB charger using the cable provided
Breath not detected	wheezo breath sensor not positioned correctly on trachea (windpipe)	Make sure wheezo sensor is held gently to your trachea on the lower part of your neck.
	Environment is too noisy	Taking of wheeze rate should be done in a quiet environment. No talking, no TV or radio and no excessive movement
	Inaudible breath	Try opening your mouth and observe the breath sound visualiser on the app screen
Couldn't find breath sensor in the app	wheezo breath sensor is not switched on	Switch wheezo breath sensor on prior to starting a wheeze rate recording by holding the power button
	wheezo breath sensor is not paired with the smart device via Bluetooth	Pair wheezo breath sensor to the smartphone via Bluetooth
	Bluetooth is not enabled on your smart device	Make sure Bluetooth is enabled on your smart device
	wheezo breath sensor is trying to connect to its last paired smartphone. LED indicator flashing alternate blue and white	Make sure the smart device is within Bluetooth range. Turn off the wheezo breath sensor. Once off, hold the power button for 5 seconds until the LED indicator changes from flashing blue and white to flashing blue.
Background noise microphone obstructed	You are holding your hand over the microphone on the back of wheezo breath sensor	Position your fingers on the finger grips on the side of wheezo breath sensor to ensure your hand is not obstructing the microphone on the back. Refer to Figure 2.

### Receiving a phone call while taking a wheeze rate

If a phone call is received while taking a wheeze rate, the process will stop. You may commence a new recording when the phone call has ended.



## TECHNICAL SPECIFICATIONS

wheezo breath sensor is non-sterile product.

Dimensions	84mm x 54mm x 48mm
Weight	104g
Operating conditions	Ambient temperature: 0° – 40° C Humidity: 15 – 90% Atmospheric pressure 700 – 1060hPa
Transport and storage	Ambient temperature -20°C – +70° C Humidity: 15 – 90% Atmospheric pressure 700 – 1060hPa
Wireless communication	Bluetooth ver V3.0+EDR Frequency Band: 2402~2480 MHz Contains FCC ID: T7V1326C2
Lithium-ion polymer battery Model SNO-602030PC by Sarnovo Technology Co., Ltd.	300mAh 3.7V, 1.11Wh Complies with IEC 62133-2:2017
Battery protective device (PTC fuse) Model 435 by Littlefuse Inc.	5A, 32Vdc
Expected service life	3 years

wheezo has been examined by an independent laboratory which has certified the conformity of the device to the European Safety Standards EN 60601-1, EN60601-1-6 and guarantees the EMC Requirements within the limits set in the European Standard EN 60601-1-2, 60601-1-11 and ETSI's EN 300328, EN301489-1, 381489-17 and the international standard IEC 60068 for environmental testing IEC 62304 for medical device software.

**FCC STATEMENT:** This device complies with part 15 of the FCC Rules. Operation is subject to the following two conditions: (1) this device may not cause harmful interference, and (2) this device must accept any interference received, including interference that may cause undesired operation.

**CAUTION:** Changes or Modifications not expressly approved by the party responsible could void the user's authority to operate this device.

**NOTE:** This equipment has been tested and found to comply with the limits for a Class B digital device, pursuant to Part 15 of the FCC Rules. These limits are designed to provide reasonable protection against harmful interference in a residential installation. This equipment generates, uses and can radiate radio frequency energy and, if not installed and used in accordance with the instructions, may cause harmful interference to radio communications. However, there is no guarantee that interference will not occur in a particular installation.

If this equipment does cause harmful interference to radio or television reception, which can be determined by turning the equipment off and on, the user is encouraged to try to correct the interference by one or more of the following measures:

- Reorient or relocate the receiving antenna.
- Increase the separation between the equipment and receiver.
- Connect the equipment into an outlet on a circuit different from that to which the receiver is connected.
- Consult the dealer or an experienced radio/TV technician for help.



### ELECTROMAGNETIC EMISSIONS DECLARATION

wheezo is intended for use in the electromagnetic environment specified below. The customer or the user of the device should assure that it is used in such an environment

Emissions Test	Compliance
Radio Frequency Radiated Emissions CISPR 11/ FCC part 15	Group 1, Class B
Radio Frequency Conducted Emissions CISPR 11/ FCC part 15	Class B

The device is suitable for use in all establishments, including domestic establishments and those directly connected to the public low-voltage network that supplies buildings used for domestic purposes.


### ELECTROMAGNETIC IMMUNITY DECLARATION

The wheezo breath sensor is intended for use in the electromagnetic environment specified below. The customer or the user of the device should assure that the device is used in such an environment.

Immunity test	Compliance level
Electrostatic discharge (ESD) IEC 61000-4-2	±8 kV contact ±15 kV air
Power frequency (50/60Hz) magnetic field IEC 61000-4-8	30 A/m
Conducted RF IEC 61000-4-6	3 Vrms 150 kHz to 80 MHz
Radiated RF IEC 61000-4-3	10 V/m 80 MHz to 2.7 GHz  3 V/m 2.7 GHz to 6GHz



## EXPLANATION OF SAFETY SIGNS AND SYMBOLS ON DEVICE AND PACKAGING

	Date of Manufacture
	Manufacturer Respiri Limited 10/446 Collins Street Melbourne Victoria 3000 Australia
	Manufacturer's reference number
	Serial number
	Consult instructions for use
	Caution consult instructions for use for warnings and cautions
	Type BF- Applied part (patient isolation from electrical shock)
	Temperature limitation
	Humidity
	Atmospheric pressure
<b>IP 42</b>	Ingress protection
	Background noise microphone
	Indicates separate collection for electrical and electronic equipment (WEEE).
	Bluetooth
	Indicates that the device meets applicable health, safety and environmental requirements
	Authorised European Representative Compliance Management Solutions Europe 2 Bulgaria Str. 2950 Petrich Bulgaria

The Bluetooth word mark and logos are registered trademarks owned by Bluetooth SIG, Inc. and any use of such marks by Respiri Limited is under license. Other trademarks and trade names are those of their respective owners.

©2019 Respiri Limited. All rights reserved. Wheezo is a trademark of Respiri Limited registered in Australia and other countries. iPhone is a trademark of Apple Inc. registered in the U.S. and other countries.

### WHEEZO LIMITED WARRANTY AND RETURNS POLICY

This Limited Warranty and Returns Policy (“Limited Warranty”) applies to the wheezo product, including accessories (the “Product”) and is given by Respire Limited to the individual or entity (the “Owner”) who uses the Product which has been obtained from Respire or a Respire authorized dealer. This Limited Warranty applies only within countries where the wheezo app is available for customers to download and for customers located in such countries, and is not transferable.

### 30-DAY RETURN POLICY

If you purchased the Product directly from Respire, then you may return the Product within 30 days of receiving it. In order for a refund under this Returns Policy to be granted, you must request a Return Merchandise Authorization (RMA) number from Respire during the 30-day period following the date you received the Product from Respire. You may request a RMA number by submitting a request to support@respire.co. The Product must be received by Respire within 3 weeks from the date on which the RMA was issued in order for you to receive a refund.

If the Product is returned to Respire in accordance with this Returns Policy, Respire will credit the account you used to make the original purchase with the full purchase price you paid for the Product and any applicable taxes minus any shipping and handling charges you paid when you purchased the Product. You are responsible for and must prepay all return shipping charges and you assume all risk of loss or damage to the Product while in transit back to Respire.

The time to credit your account may vary, depending on processing time. Please allow up to seven business days for Respire to credit the account used to make the original purchase. If you received a damaged Product directly from Respire, please contact support@respire.co.

**Purchases through an Authorized Dealer:** If you purchased the Product from a Respire authorized retailer or distributor, please contact that retailer or distributor. You must follow the return policy of that authorized retailer or distributor.

### MANUFACTURER’S LIMITED WARRANTY

Respire warrants to the Owner that the Product will materially conform to its published specifications and be free from defects in materials and workmanship under normal use for a period of the greater of 1 year or the amount of time required by applicable consumer regulations associated in the country of purchase and commencing on the date of delivery (the “Warranty Period”).

If the Product proves defective during the Warranty Period, you must follow the instructions set out below for returning the Product, or part thereof, and Respire will replace the Product, with a product that is the same or equivalent to the Product you purchased.

A replacement Product assumes the remaining warranty of the original Product, or 30 days from the date of replacement, whichever is longer. Respire reserves the right to replace any discontinued Product with a new product of comparable value and function.

### HOW TO OBTAIN WARRANTY SERVICE

To obtain warranty service on a Product purchased directly from Respiro, contact [support@respiro.co](mailto:support@respiro.co).

If Respiro determines that a Product is eligible for warranty replacement, Respiro shall bear the costs associated with returning a Product under warranty. Respiro is not responsible for items damaged or lost in transit. Replaced Products are the property of Respiro. The time to credit your account may vary, depending on processing time. Please allow up to seven business days for Respiro to credit the account used to make the original purchase. If you received a damaged Product directly from Respiro, please contact [support@respiro.co](mailto:support@respiro.co).

Purchases through an Authorized Dealer: If you purchased the Product from a Respiro authorized retailer or distributor, please contact that retailer or distributor. You must follow the return policy of that authorized retailer or distributor.

A replacement Product provided under this Limited Warranty will only be dispatched to addresses within countries where the wheezo app is available for customers to download and for customers located in such countries, and is not transferable.

Purchases through an Authorized Dealer: To obtain warranty service on Product purchased from a Respiro authorized distributor, please contact that authorized distributor.

Respiro covers the product for the Warranty Period as long as proof of purchase can be provided, please contact [support@respiro.co](mailto:support@respiro.co).



#### WHAT IS NOT COVERED?

This Limited Warranty will be void if the Product: (a) is used in any manner that is inconsistent with the intended purpose or design of the Product as described in Respiro's published documentation for the Product, (b) is altered in any way, (c) the Product is used or maintained in any manner that is inconsistent with Respiro's instructions or warnings included with the Product or (d) the Product is subjected to any other misuse, abuse, neglect, accident, or external forces.

This Limited Warranty does not cover normal wear and tear.

Respiro does not warrant that the operation of the Product will be uninterrupted or error-free.

**WARRANTY DISCLAIMER:** This Limited Warranty replaces all other Respiro warranties and liabilities whether oral, written, (non-mandatory) statutory, contractual, in tort or otherwise, including without limitation, and where permitted by applicable law, any implied conditions, warranties or other terms as to satisfactory quality or fitness for purpose.

To the greatest extent permitted by applicable law, the warranties set forth in this limited warranty are exclusive and no other warranty, whether written or oral, expressed or implied, applies with respect to THE PRODUCT AND ANY SERVICES PROVIDED UNDER THIS AGREEMENT, INCLUDING WITHOUT LIMITATION ANY WARRANTY OF DESIGN, MERCHANTABILITY, SATISFACTORY QUALITY, FITNESS FOR A PARTICULAR PURPOSE (EVEN IF ALIVECOR HAS BEEN INFORMED OF SUCH PURPOSE) OR AGAINST INFRINGEMENT.

IF ANY IMPLIED WARRANTY CANNOT BE DISCLAIMED UNDER APPLICABLE LAW, THEN SUCH IMPLIED WARRANTY

SHALL BE LIMITED IN DURATION TO THE WARRANTY PERIOD set forth ABOVE.

#### LIMITATION OF REMEDIES

THE REMEDIES IN THIS LIMITED WARRANTY ARE YOUR SOLE AND EXCLUSIVE REMEDIES.

Resellers, agents, or employees of Respiro are not authorized to make any modification, extension, or addition to this Limited Warranty.

To the greatest extent permitted by applicable law, Respiro does not assume any liability for loss of or damage to or corruption of data, for any loss of profit, loss of use of Products or functionality, loss of business, loss of contracts, loss of revenues or loss of anticipated savings, increased costs or expenses or for any indirect loss or damage, consequential loss or damage or special loss or damage.

To the greatest extent permitted by applicable law, Respiro's liability shall be limited to the purchase value of the Product.

THE LIMITATIONS SET FORTH IN THIS LIMITED WARRANTY ARE INTENDED TO LIMIT THE LIABILITY OF RESPIRO AND SHALL APPLY NOTWITHSTANDING ANY FAILURE OF ESSENTIAL PURPOSE OF ANY LIMITED REMEDY.

#### OTHER IMPORTANT NOTICES

The rights provided to you under this Limited Warranty are provided in addition to all rights and remedies conveyed to you by applicable consumer protection laws and do not affect your legal (statutory) rights under your applicable national law.

The jurisdiction applicable to you may not allow the limitations of liability or damages set forth in this Limited Warranty, in which case such limitations shall only apply to you to the extent permitted in such jurisdiction.

This Limited Warranty is offered subject to Respiro's Terms and Conditions, which may change from time to time. You can find the latest version on our website at: <https://wheezo.com/app/terms/> In the case of any inconsistencies between the Terms of Service and this Limited Warranty, this Limited Warranty will prevail.

This Limited Warranty does not apply to any mobile device or the cellular and/or other network or system on which the Product operates. Therefore, Respiro will not accept any responsibility under this Limited Warranty for the operation, availability, coverage, services or range of the cellular or other network or system.

Always completely follow safety, use, operation, and maintenance instructions for the Product or any other Respiro product.

This Limited Warranty is governed by the laws of Victoria, Australia.



RESPIRI



Manufactured for and Distributed by:  
Respiri Limited

10/446 Collins Street Melbourne Victoria 3000 Australia  
For additional information email [info@respiri.co](mailto:info@respiri.co)



wheezo

DESIGNED IN AUSTRALIA



Respiri Limited reserves the right to make changes and improvements to this manual and the products it describes at any time, without notice or obligation.