



Community Profile Report

November 8 2021

The Community Profile Report (CPR) is generated by the Data Strategy and Execution Workgroup, under the White House COVID-19 Team. It is managed by an interagency team with representatives from multiple agencies and offices (including the United States Department of Health and Human Services, the Centers for Disease Control and Prevention, the Assistant Secretary for Preparedness and Response, and the Indian Health Service). The CPR provides easily interpretable information on key indicators for all regions, states, core-based statistical areas (CBSAs), and counties across the United States. It is a daily snapshot in time that:

- Focuses on recent COVID-19 outcomes in the last seven days and changes relative to the week prior
- Provides additional contextual information at the county, CBSA, state and regional levels
- Supports rapid visual interpretation of results with color thresholds

Data in this report may differ from data on state and local websites. This may be due to differences in how data were reported (e.g., date specimen obtained, or date reported for cases) or how the metrics are calculated. Historical data may be updated over time due to delayed reporting. Data presented here use standard metrics across all geographic levels in the United States. It facilitates the understanding of COVID-19 pandemic trends across the United States by using standardized data. The footnotes describe each data source and the methods used for calculating the metrics. For additional data for any particular locality, visit the relevant health department website. Additional data and features are forthcoming.

White House COVID-19 Team, Data Strategy and Execution Workgroup

All inquiries and requests for information to DSEW should be directed to <https://wwwn.cdc.gov/dcs/ContactUs/Form>.

INITIAL PUBLIC RELEASE // SUBJECT TO CHANGE

Table of Contents

National Time Series	<p>3. National time series (national case, death, percent test positivity, and hospital admission curves)</p> <p>4. Time series by Census Region (regional case, death, percent test positivity, and hospital admission curves)</p>
National Maps	<p>5. Number of new cases and deaths in the last 7 days</p> <p>6-8. Case incidence/Mortality rate/NAAT positivity in the last 7 days and comparison to the previous 7 days</p> <p>9. Hospital admissions in the last 7 days and comparison to the previous 7 days</p> <p>10-11. Hospital inpatient/ICU COVID-19 utilization in the last 7 days and comparison to the previous 7 days</p> <p>12. Vaccination rates by county (% of total population and % of 65+ population fully-vaccinated)</p> <p>13. Community transmission level (describes community transmission level derived from cases and test positivity)</p> <p>14. Area of Concern Continuum (describes communities as they progress through stages of the epidemic)</p> <p>15. Area of Concern Continuum - Rapid Riser Counties (highlights counties with recent acceleration in cases)</p>
National and State Profiles	<p>16. National and regional metrics (key indicators at the regional and national levels)</p> <p>17-18. State profiles and weekly categories (states grouped into categories based on transmission level at the beginning of the week)</p>
National Trends	<p>19. Trends in case incidence during the last 8 weeks (state, regional, and national case incidence curves)</p> <p>20. Trends in mortality rate during the last 4 weeks and 4 week forecast (state and national mortality curves, with 4-week CDC ensemble forecast)</p> <p>21. Trends in NAAT positivity during the last 8 weeks (state, regional and national, percent test positivity curves)</p> <p>22. Trends in emergency department discharge diagnoses during the last 8 weeks (state, regional, and national ED visit curves)</p> <p>23. Trends in hospital admissions per 100 beds during the last 8 weeks (state, regional, and national hospital admission curves)</p> <p>24-25. Trends in hospital inpatient/ICU COVID utilization during the last 8 weeks (state, regional, and national hospital utilization curves)</p> <p>26. Trends in percent of population aged 18+ initiating vaccination during the last 8 weeks (state, regional, and national vaccine doses administered curves)</p> <p>27. National trends in NAAT positivity by age group (national trends showing test volume, number of tests, and percent test positivity by age group)</p> <p>28. Trends in NAAT positivity by age group and FEMA Region</p> <p>29. Trends in hospital admissions per 100k by age group (national and regional trends)</p>
Data Sources and Methods	<p>30. Data sources and methods (data sources and notes for cases and deaths, testing data, and hospital data)</p> <p>31. Data sources and methods – color thresholds (definitions for color coding used throughout slides)</p> <p>32. Data sources and methods – dynamic data notes (data notes that are updated each day or as needed)</p> <p>33. Data sources and methods – AOC Continuum (detailed description of 7 stages of the epidemic described within the AOC continuum)</p>

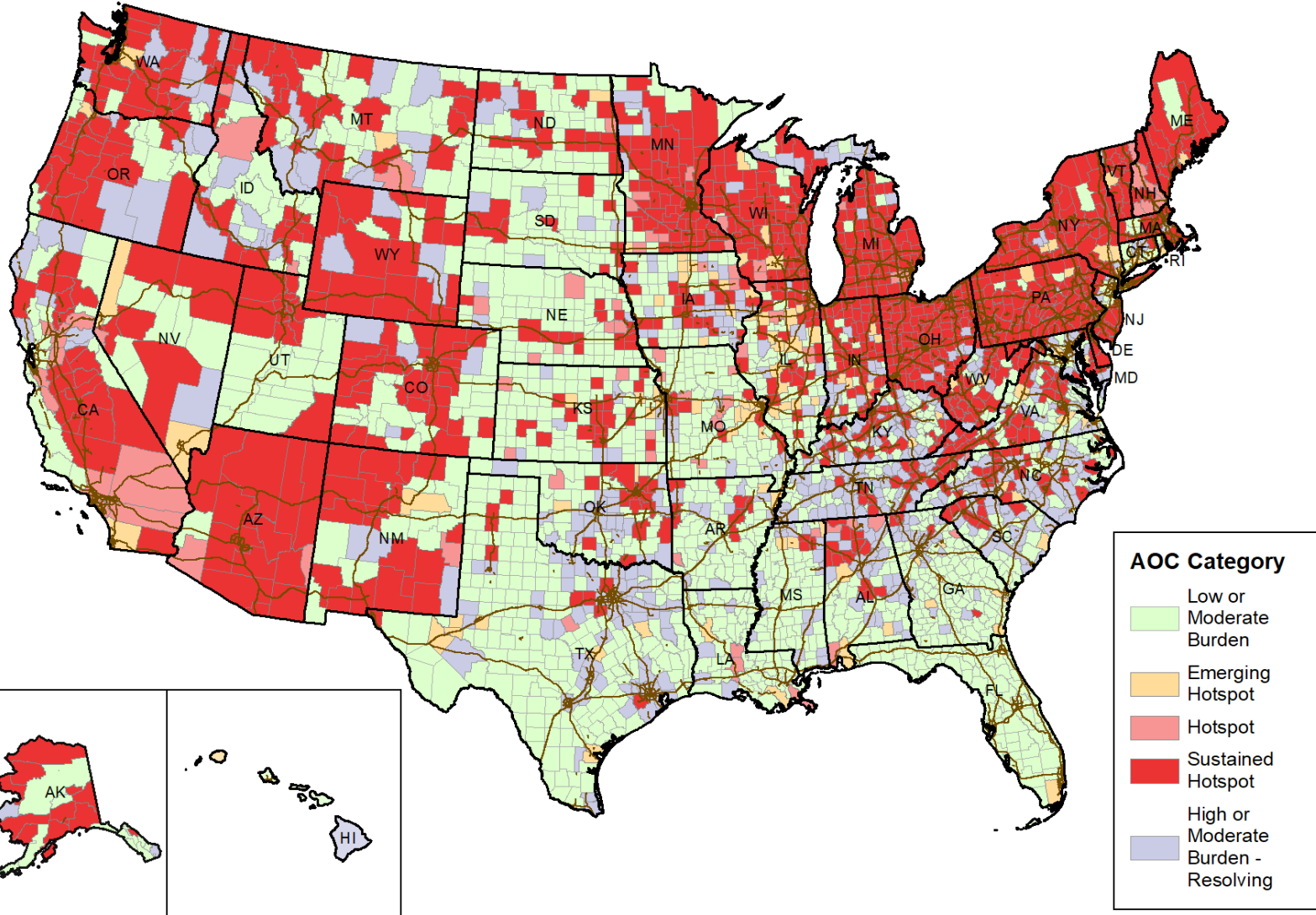
White House COVID-19 Team, Data Strategy and Execution Workgroup

All inquiries and requests for information to DSEW should be directed to <https://wwwn.cdc.gov/dcs/ContactUs/Form>.

AREA OF CONCERN CONTINUUM

Date: 11/8/2021

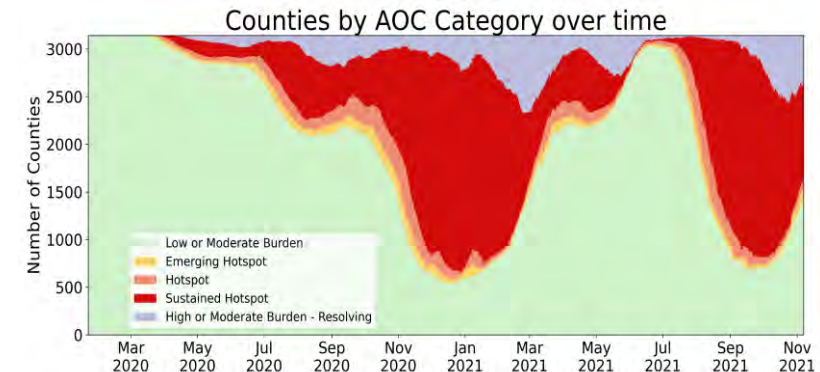
Area of Concern Continuum by County 07NOV2021



The Areas of Concern Continuum (AOCC) is used to describe communities as they progress through stages of the epidemic. There are 7 possible AOC classifications based on current and recent history of case and testing data for the location:

- (1) **Low Burden** – communities with minimal activity
- (2) **Moderate Burden** – communities with moderate disease activity
- (3) **Emerging Hotspot** – communities with a high likelihood to become hotspots in the next 1-7 days
- (4) **Hotspot** – communities that have reached a threshold of disease activity considered as being of high burden
- (5) **Sustained Hotspot** – communities that have had a high sustained case burden and may be higher risk for experiencing healthcare resource limitations
- (6) **High Burden – Resolving** – communities that were recently identified as hotspots and are now improving
- (7) **Moderate Burden – Resolving** – communities that have a moderate level of burden, but are demonstrating improvement

See Data Sources/Methods slides for more information.



DATA SOURCES AND METHODS – AOC CONTINUUM

The **Areas of Concern Continuum** is used to describe communities as they progress through stages of the epidemic. There are 7 possible AOC classifications based on current and recent history of case and testing data for the location:

Low Burden Community

Purpose: Identify communities with minimal activity.

Definition:

- <10 new cases per 100k population in the last week

Moderate Burden Community

Purpose: Identify communities with moderate disease activity.

Definition:

- Has **NOT** been identified as a Hotspot, Sustained Hotspot, or High Burden—Resolving within the last 2 weeks
AND
- Does not meet the definition for an Emerging Hotspot, Hotspot, Sustained Hotspot, or High Burden—Resolving
AND
- Does not meet the definition for being a Low Burden Community

Emerging Hotspot

Purpose: Generate early and reliable signals of communities with emerging increases in disease burden that have a high likelihood for becoming a hotspot in the next 1-7 days.

Method:

Decision tree model that leverages the following features, trained based on prior data:

Cases

- Total cases in the last week
- Total cases per 100k population in the last week
- New cases in the last week minus new cases the previous week
- Ratio of total cases in last 7 days to total cases in last 30 days

Testing

- Number of tests last week
- Difference in percent positive tests in last 7 days from last 21 days

Hotspot

Purpose: Identify communities that have reached a threshold of disease activity considered as being of high burden.

Definition:

- >100 new cases per 100k population OR >500 new cases in the past week
AND
- Number of days in downward case trajectory* \leq 7 days
AND
- >50 cases during past week
AND
- Conditions must hold for at least 3 of the previous 5 days

Sustained Hotspot

Purpose: Identify communities that have had a high sustained case burden and are at potentially higher risk for experiencing healthcare resource limitations.

Definition:

- Either Hotspot for at least 7 preceding days or already a Sustained Hotspot on previous day
AND
- >200 new cases per 100k population OR >1,000 new cases in the past two weeks
AND
- Daily incidence rate >15 new cases per 100k population for 8 or more of the last 14 days OR test positivity >8% over last 14 days
AND
- >100 cases during the last two weeks
AND
- Conditions must hold for at least 3 of the previous 5 days

Data Sources: CDC Aggregate County Data; Unified Testing Dataset; US Census 2019

High Burden - Resolving

Purpose: Identify communities that were recently identified as hotspots and are now improving.

Definition:

- Identified as a Hotspot or Sustained Hotspot within the last 2 weeks
AND
- Not currently a Emerging Hotspot, Hotspot, or Sustained Hotspot
AND
- >100 new cases per 100k population OR >500 new cases in last week
AND
- Number of days in downward trajectory* \geq 7
AND
- >50 cases during last week OR both \geq 10 cases in last week and >8% test positivity in last week

Moderate Burden - Resolving

Purpose: Identify communities that have a moderate level of burden, but are demonstrating improvement.

Definition:

- Identified as a Hotspot, Sustained Hotspot, or High Burden—Resolving within the last 2 weeks
AND
- Does not meet the definition for an Emerging Hotspot, Hotspot, Sustained Hotspot, or High Burden—Resolving
AND
- Does not meet the definition for being a Low Burden Community

***Number of Days in Downward Case Trajectory:** This field is calculated using a CDC algorithm that first fits a smooth spline curve to daily case counts, and then counts the number of days that curve has been decreasing or at a low level. More specifically, the computation is based on a cubic spline fit of the 7-day rolling average of cases. The number of days decreasing (in downward trajectory) is calculated by summing the number of consecutive days of decline or near-zero incidence. A day is considered part of a downward trajectory if it (i) was previously at elevated incidence (had a two-week incidence greater than 10 cases per 100k population), and (ii) meets one of the following three conditions: (a) had a negative slope, OR (b) was in a low-incidence plateau (two-week incidence \leq 10 cases per 100k population and a slope \geq 0 to < 0.1 new cases per 100k population based on a 7-day moving average), OR (c) had less than 5 cases in the past 2 weeks.