



Community Profile Report

September 22 2021

The Community Profile Report (CPR) is generated by the Data Strategy and Execution Workgroup, under the White House COVID-19 Team. It is managed by an interagency team with representatives from multiple agencies and offices (including the United States Department of Health and Human Services, the Centers for Disease Control and Prevention, the Assistant Secretary for Preparedness and Response, and the Indian Health Service). The CPR provides easily interpretable information on key indicators for all regions, states, core-based statistical areas (CBSAs), and counties across the United States. It is a daily snapshot in time that:

- Focuses on recent COVID-19 outcomes in the last seven days and changes relative to the week prior
- Provides additional contextual information at the county, CBSA, state and regional levels
- Supports rapid visual interpretation of results with color thresholds

Data in this report may differ from data on state and local websites. This may be due to differences in how data were reported (e.g., date specimen obtained, or date reported for cases) or how the metrics are calculated. Historical data may be updated over time due to delayed reporting. Data presented here use standard metrics across all geographic levels in the United States. It facilitates the understanding of COVID-19 pandemic trends across the United States by using standardized data. The footnotes describe each data source and the methods used for calculating the metrics. For additional data for any particular locality, visit the relevant health department website. Additional data and features are forthcoming.

White House COVID-19 Team, Data Strategy and Execution Workgroup

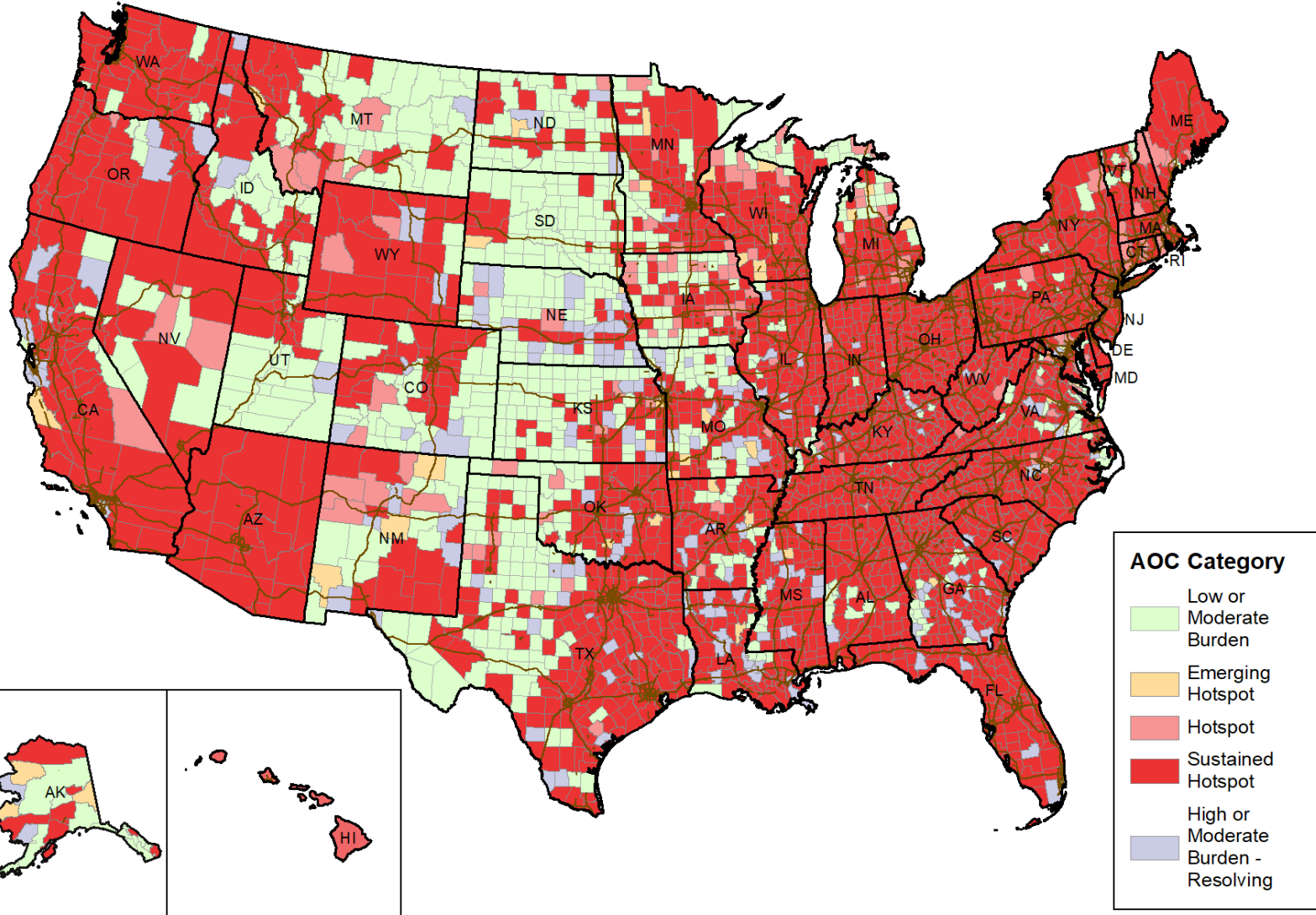
All inquiries and requests for information to DSEW should be directed to <https://wwwn.cdc.gov/dcs/ContactUs/Form>.

INITIAL PUBLIC RELEASE // SUBJECT TO CHANGE

AREA OF CONCERN CONTINUUM

Date: 9/22/2021

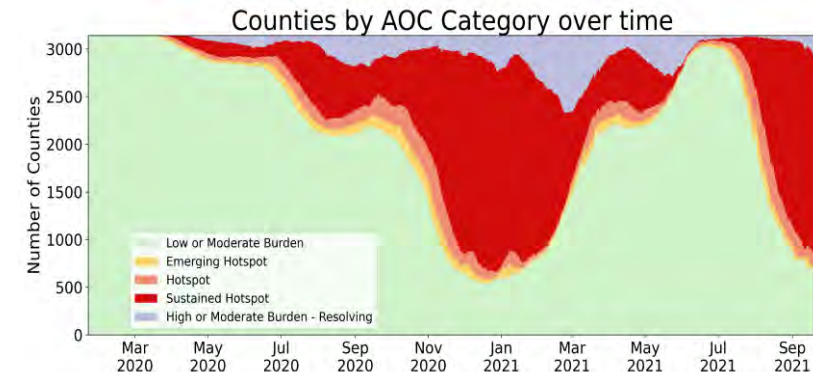
Area of Concern Continuum by County 21SEP2021



The Areas of Concern Continuum (AOCC) is used to describe communities as they progress through stages of the epidemic. There are 7 possible AOC classifications based on current and recent history of case and testing data for the location:

- (1) **Low Burden** – communities with minimal activity
- (2) **Moderate Burden** – communities with moderate disease activity
- (3) **Emerging Hotspot** – communities with a high likelihood to become hotspots in the next 1-7 days
- (4) **Hotspot** – communities that have reached a threshold of disease activity considered as being of high burden
- (5) **Sustained Hotspot** – communities that have had a high sustained case burden and may be higher risk for experiencing healthcare resource limitations
- (6) **High Burden – Resolving** – communities that were recently identified as hotspots and are now improving
- (7) **Moderate Burden – Resolving** – communities that have a moderate level of burden, but are demonstrating improvement

See Data Sources/Methods slides for more information.



DATA SOURCES AND METHODS – AOC CONTINUUM

The **Areas of Concern Continuum** is used to describe communities as they progress through stages of the epidemic. There are 7 possible AOC classifications based on current and recent history of case and testing data for the location:

Low Burden Community

Purpose: Identify communities with minimal activity.

Definition:

- <10 new cases per 100k population in the last week

Moderate Burden Community

Purpose: Identify communities with moderate disease activity.

Definition:

- Has **NOT** been identified as a Hotspot, Sustained Hotspot, or High Burden—Resolving within the last 2 weeks
AND
- Does not meet the definition for an Emerging Hotspot, Hotspot, Sustained Hotspot, or High Burden—Resolving
AND
- Does not meet the definition for being a Low Burden Community

Emerging Hotspot

Purpose: Generate early and reliable signals of communities with emerging increases in disease burden that have a high likelihood for becoming a hotspot in the next 1-7 days.

Method:

Decision tree model that leverages the following features, trained based on prior data:

Cases

- Total cases in the last week
- Total cases per 100k population in the last week
- New cases in the last week minus new cases the previous week
- Ratio of total cases in last 7 days to total cases in last 30 days

Testing

- Number of tests last week
- Difference in percent positive tests in last 7 days from last 21 days

Hotspot

Purpose: Identify communities that have reached a threshold of disease activity considered as being of high burden.

Definition:

- >100 new cases per 100k population OR >500 new cases in the past week
AND
- Number of days in downward case trajectory* ≤ 7 days
AND
- >50 cases during past week
AND
- Conditions must hold for at least 3 of the previous 5 days

Sustained Hotspot

Purpose: Identify communities that have had a high sustained case burden and are at potentially higher risk for experiencing healthcare resource limitations.

Definition:

- Either Hotspot for at least 7 preceding days or already a Sustained Hotspot on previous day
AND
- >200 new cases per 100k population OR >1,000 new cases in the past two weeks
AND
- Daily incidence rate >15 new cases per 100k population for 8 or more of the last 14 days OR test positivity >8% over last 14 days
AND
- >100 cases during the last two weeks
AND
- Conditions must hold for at least 3 of the previous 5 days

Data Sources: CDC Aggregate County Data; Unified Testing Dataset; US Census 2019

High Burden - Resolving

Purpose: Identify communities that were recently identified as hotspots and are now improving.

Definition:

- Identified as a Hotspot or Sustained Hotspot within the last 2 weeks
AND
- Not currently a Emerging Hotspot, Hotspot, or Sustained Hotspot
AND
- >100 new cases per 100k population OR >500 new cases in last week
AND
- Number of days in downward trajectory* ≥ 7
AND
- >50 cases during last week OR both ≥ 10 cases in last week and >8% test positivity in last week

Moderate Burden - Resolving

Purpose: Identify communities that have a moderate level of burden, but are demonstrating improvement.

Definition:

- Identified as a Hotspot, Sustained Hotspot, or High Burden—Resolving within the last 2 weeks
AND
- Does not meet the definition for an Emerging Hotspot, Hotspot, Sustained Hotspot, or High Burden—Resolving
AND
- Does not meet the definition for being a Low Burden Community

***Number of Days in Downward Case Trajectory:** This field is calculated using a CDC algorithm that first fits a smooth spline curve to daily case counts, and then counts the number of days that curve has been decreasing or at a low level. More specifically, the computation is based on a cubic spline fit of the 7-day rolling average of cases. The number of days decreasing (in downward trajectory) is calculated by summing the number of consecutive days of decline or near-zero incidence. A day is considered part of a downward trajectory if it (i) was previously at elevated incidence (had a two-week incidence greater than 10 cases per 100k population), and (ii) meets one of the following three conditions: (a) had a negative slope, OR (b) was in a low-incidence plateau (two-week incidence ≤ 10 cases per 100k population and a slope ≥ 0 to < 0.1 new cases per 100k population based on a 7-day moving average), OR (c) had less than 5 cases in the past 2 weeks.